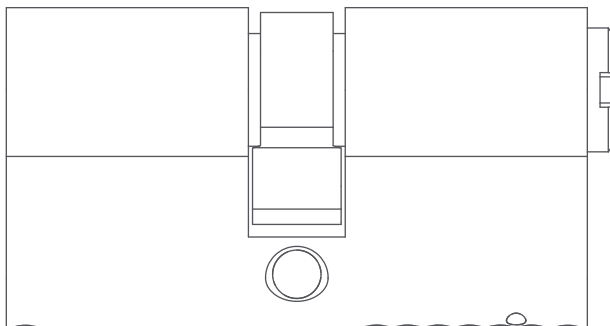


Aqara



Adjustable Cylinder **EU**

Product Introduction

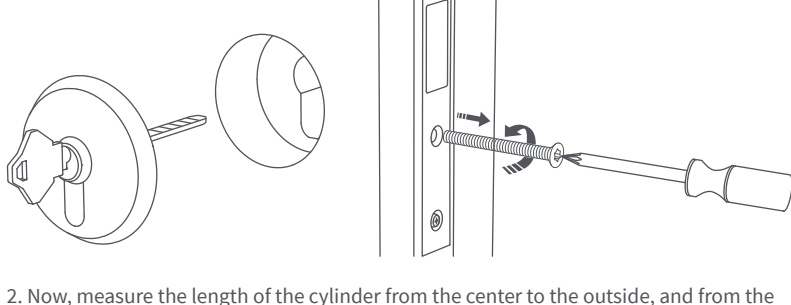
The Aqara Adjustable Cylinder is tailored for the Smart Lock U200. You can adjust the cylinder length to match thickness, making it suitable for installation on different doors.

Installation steps

1. Removing the door trim cover first might make it easier to remove the cylinder. The screws for the trim cover are usually located on the inside of the door trim.

Next, remove the cylinder by loosening the cylinder fixing screw. This screw is typically found on the side of the door lock, below the multi-point spring bolts.

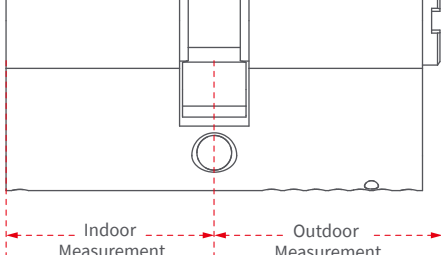
You might need to insert the key and turn or jiggle it to extract the core from the door.



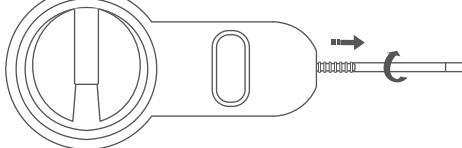
2. Now, measure the length of the cylinder from the center to the outside, and from the center to the inside.

The two lengths may be the same or different. Please record them. For example, the indoor length is 40 mm and the outdoor length is 43 mm.

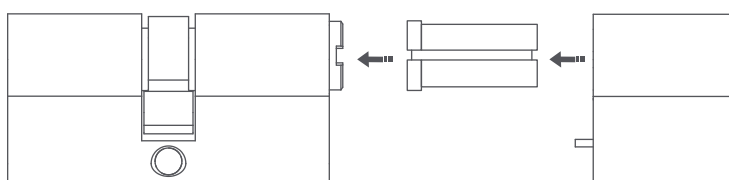
If both the outside and inside lengths are 30mm, no further adjustment is needed. The Adjustable Cylinder can be installed directly.



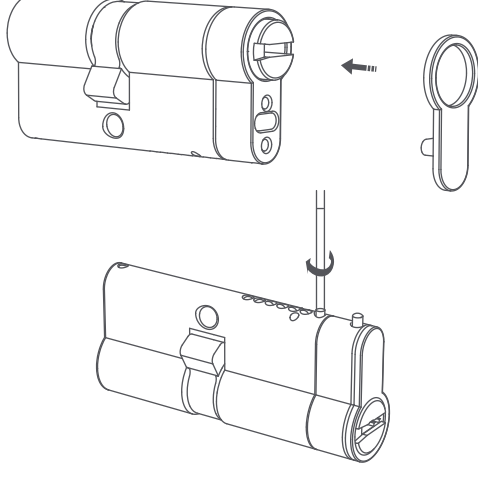
3. Assemble the outdoor cylinder, adjusting the length as needed. First, unscrew the screw on the side that needs to be extended.



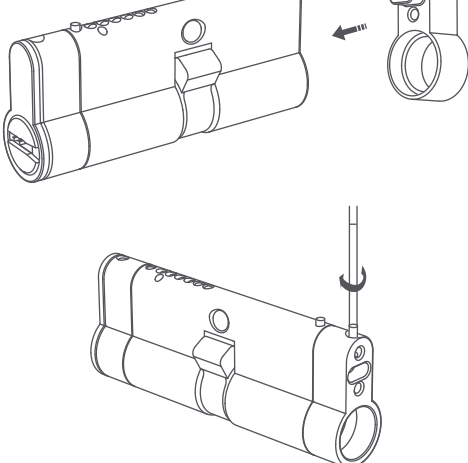
Select the appropriate extension piece to assemble based on the measurement results.



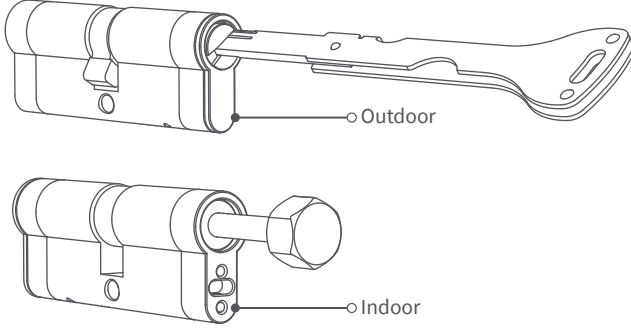
Attach the protective plate, and tighten the screw to secure the cylinder.



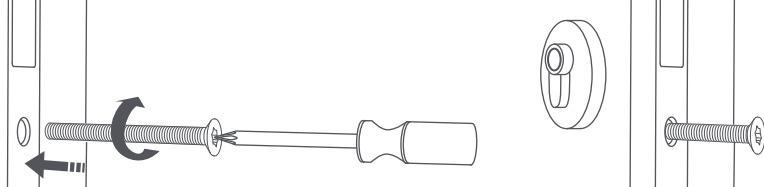
4. Assemble the indoor cylinder. Adjusting the length as needed. Choose the right extension based on measurements. Tighten all the screws to secure the cylinder.



5. Insert the key and urn to test for smooth operation. Then check that the cylinder adaptor can rotate freely and drive the key on the outside.

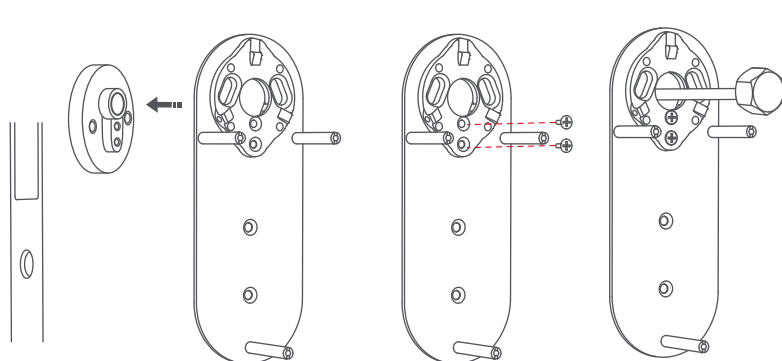


6. Install the cylinder to the door using the fixing screws provided in the packaging box.

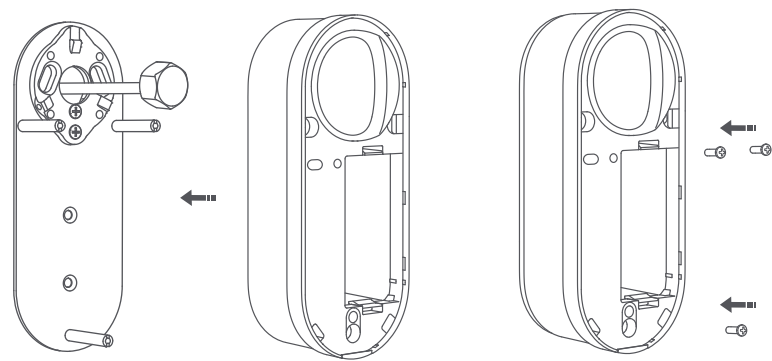


7. Install the fixed panel of Smart Lock U200 onto the cylinder using 2 Phillips screws.

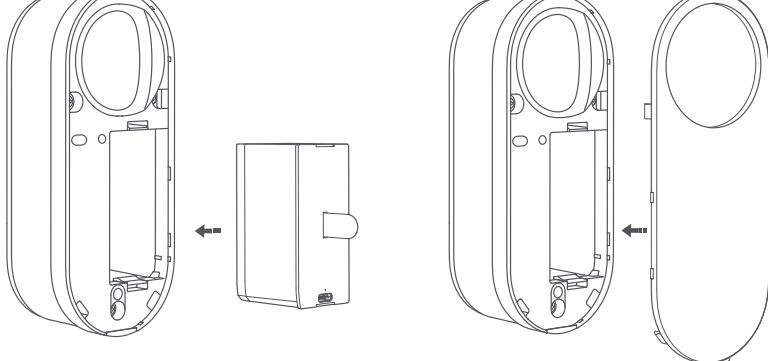
Next, attach the adapter to the cylinder, and open the door from the inside to verify that it can be both unlocked and locked using the cylinder key and adapter.



8. Install the Smart Lock U200 and secure it to the fixed panel by tightening the three fixing screws.



9. Finally, insert the battery and proceed with the setup via the Aqara Home app or other compatible Matter ecosystems.



Online Customer Service: www.aqara.com/en/support.html

Manufacturer: Lumi United Technology Co., Ltd.

Email: support@aqara.com

Address: Room 801-804, Building 1, Chongwen Park, Nanshan iPark, No. 3370, Liuxian Avenue, Fuguang Community, Taoyuan Residential District, Nanshan District, Shenzhen, China